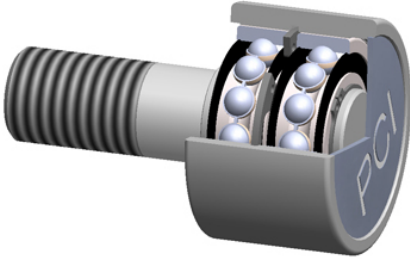




# Koyo NRB BEARING MANUFACTURING LLC

## PCI Procal Inc. PTR-2.50 Crowned & Flat Cam Followers Bearings



Bearing No. PTR-2.50

roller diameter:	2.5000 in
closure type:	Sealed
roller width:	1.6875 in
head type:	Hex
stud diameter:	1.0000 in
thread size:	1-14
stud length:	2.2500 in
radial dynamic load capacity:	5560 lbs
roller shape:	Flat
radial static load capacity:	3500 lbs
roller material:	Chrome Steel
technical specifications:	<a href="#">Click here</a>
bearing element:	Balls - Two Rows

PTR-2.50 Bearing 2D drawings and 3D CAD models